

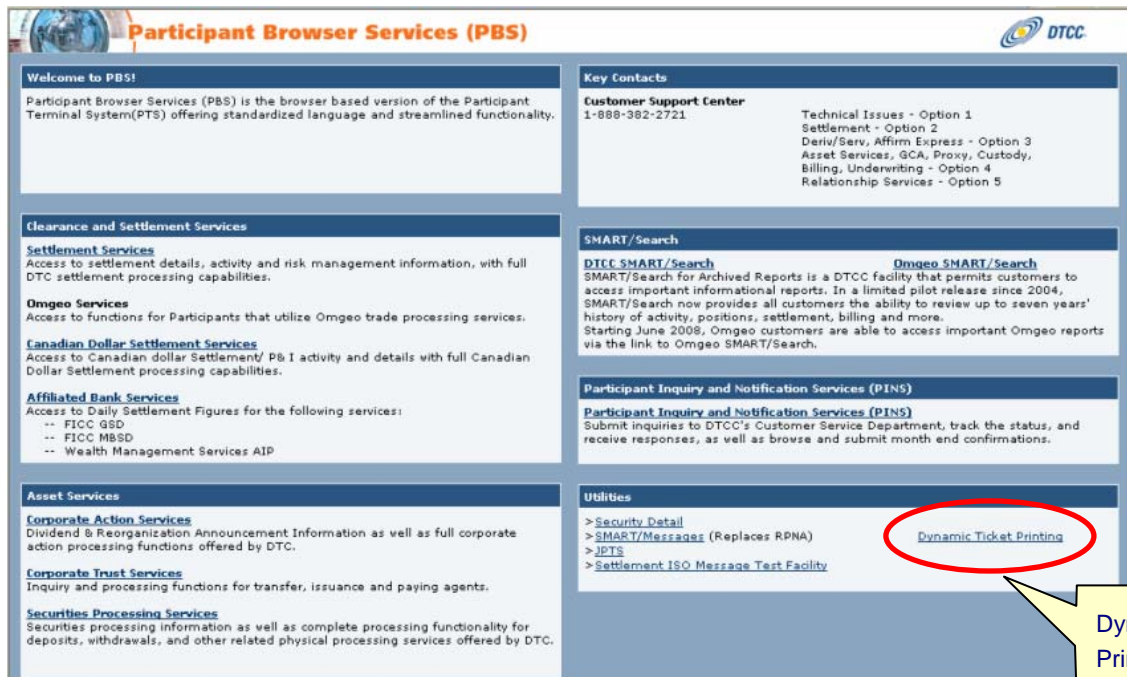


Setting up Dynamic Ticket Printing

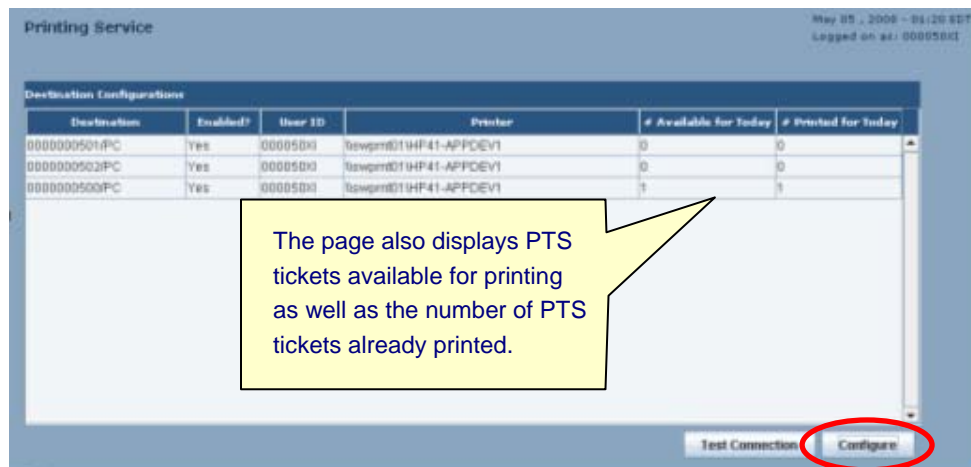
DTCC's **Dynamic Ticket Printing** application allows you to continuously receive and print PTS tickets to your local PC printers. Once you configure and enable your printers, all waiting PTS tickets print automatically on arrival.

To set up

- 1 Click the **Dynamic Ticket Printing** link in the Utilities section of your Participant Browser Services (PBS) home page: <http://pwebpts/>.



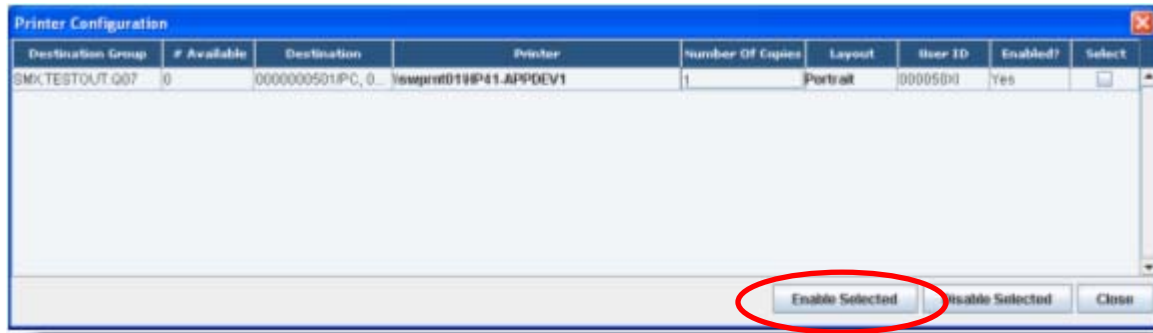
- 2 The Printing Service page appears with a list of printers available for dynamic ticket printing. You can test and configure each printer by clicking the **Test Connection** and **Configure** buttons.





3 Click **Configure**.

The Printer Configuration page appears.



4 Click the **Enable Selected** button to enable the printer you selected. Once enabled, the printer will print PTS tickets automatically on arrival.

Note: You can disable selected printers by clicking the **Disable Selected** button.

System Requirements

To set up Dynamic Ticket Printing, you must have the following:

- Internet Explorer, version 6.0 or higher
- Java Plug-in, version 1.5.0 or higher
- Local/Network PC printers configured to your PC