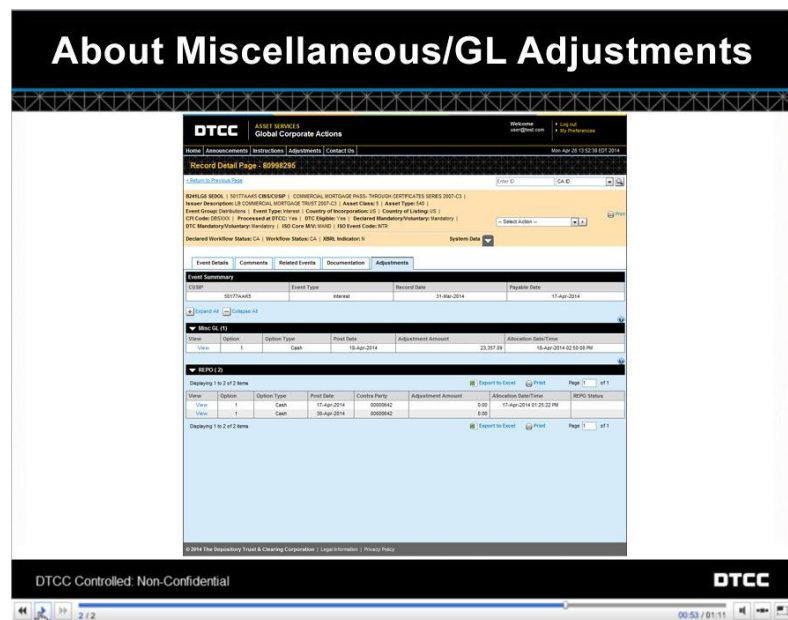


ASSET SERVICES

ABOUT MISCELLANEOUS/GL ADJUSTMENTS



Misc/GL Ledger adjustments, also called “Miscellaneous/GL” adjustments, are individual debits or credits to your account.

A cash event can include a Misc/GL adjustment for a number of reasons.

For example, they may include adjustments that were manually created by DTC staff, such as Cash Adjustments.

They may also include the money payment of an Adjustment Payment Order, or “APO.” An APO is a client modification to the cash portion of a stock lending or repo adjustment. These client-entered adjustment payment orders appear as Misc/GL adjustments, recording the cash payment of the APO.

Miscellaneous / General Ledger adjustments that are pending or allocated appear under the “Misc/GL” twisty on the Adjustments tab.

An **Event Summary** at the top of the **Adjustments** tab shows the **CUSIP, Event Type, Record Date,** and **Payable Date** for the distribution.

The area under the Event Summary lists all adjustments to the event. You can see more than one adjustment type here – each type is listed out in a separate table. These tables contain slightly different information, depending on the adjustment type.

For Misc/GL adjustments, you can see information about the event’s option that the adjustment applies to, as well as when the adjustment is scheduled to pay.

Specifically, this includes:

- The **Option Number.**
- The **Option Type.**
- The **DTC Post Date**, or the date on which DTC is scheduled to make the adjustment to your account.
- The **Adjustment Amount**, and
- The **Allocation Date/Time.** For Misc/GL, this will be populated after DTC completes its daily settlement.

Please note that the DTC **Post Date** may not reflect the **Payable Date**: the Post Date is when DTC actually pays you or makes the adjustment. Note that the DTC Post Date may, in some cases, be several days after the Payable Date.

To see additional information regarding debits and credits to be charged or paid, click any of the **View** hyperlinks.

Each link opens a window that shows details of a miscellaneous general ledger adjustment.

For these adjustments, you will notice that the “prepared by” field will often be “Customer Service.” The Customer Help Center’s phone number is provided here – you can call for more information if you need it.

Here, we see that the adjustment is an APO due to a bad repo on a stock loan. The APO was entered by Jane Smith, whose client number is “0123.” The contra party’s phone number is also provided.

This client’s account was credited \$23,357.09, which you can see in the **Adjustment Amount** field of the Misc/GL table.

If the APO has not yet allocated, refer to the Help topic called “APO Business Rules” for possible reasons why.

For instance, if this is an adjustment payment order and the contra party has rejected the APO, it will not process because it was rejected. Or, if the APO was resubmitted after the APO cutoff of 2:30 p.m. eastern time, it won’t be processed until the next business day.

© 2020 DTCC. All rights reserved. DTCC, DTCC (Stylized), ADVANCING FINANCIAL MARKETS. TOGETHER, and the Interlocker graphic are registered and unregistered trademarks of The Depository Trust & Clearing Corporation.

The services described herein are provided under the “DTCC” brand name by certain affiliates of The Depository Trust & Clearing Corporation (“DTCC”). DTCC itself does not provide such services. Each of these affiliates is a separate legal entity, subject to the laws and regulations of the particular country or countries in which such entity operates. Please see www.dtcc.com for more information on DTCC, its affiliates and the services they offer.

Doc Date: 2014

Publication Code: CA176

Service: Asset Services

Title: About Miscellaneous/GL Adjustments

FOR MORE INFORMATION

Email DTCC Learning at:

CoreLearning@dtcc.com

or visit us on the web at:

www.dtccllearning.com