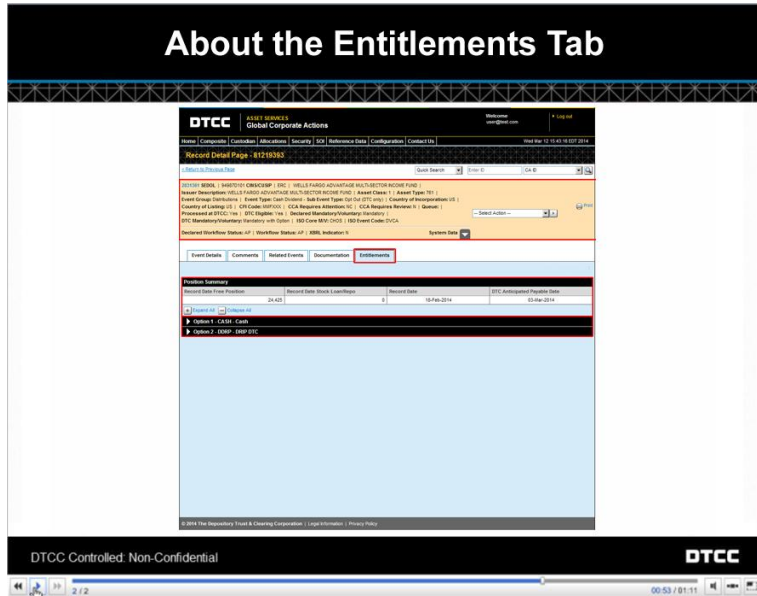


Transcript for "About the Entitlements Tab" Talking Help Topic



Selecting an event from the Allocations Overview page brings you directly to the Entitlements tab. The Entitlements tab will not appear until the position capture date, and only if you have position in a given event.

Here in the Summary area, you can view details about this specific event.

Below, in the Position Summary, you can view your position capture.

An important thing to note about the Entitlements tab is that all of this information is broken down by option. Every distribution event has at least one option, and every option will have at least one payout level.

Click the twisty next to each option to expand it. You can then view its details and payment information.

You are given a summary for each option. This table gives you a high-level view of where your company stands with this option for this event.

For example, you can see the **Net Position**, which is calculated for each option. The sum of the net position for all options equals the **Record Date Free Position** shown in the summary on the top.

You can also see the **Net Fail Position**, which is the difference between the fails to receive and the fails to deliver. You won't see anything in this field unless there is a fail-to-settle scenario.

Here's the **Record Date**, the day on which this position was captured.

Transcript for "About the Entitlements Tab" Talking Help Topic

The **DTC Anticipated Payable Date** is the day on which DTC believes that this dividend will be payable.

Here in the **DTC Rate** field, you can see either the cash or the stock rate, depending upon the option.

The **Total Cash Due** and **Shares Disbursed** fields display the projected dividend of this type to which the client is entitled, and finally

The **Allocated Amount displays** the total amount of this dividend that has been allocated to the client.

Note that this allocated amount displays after DTC receives the payment and allocates cash or shares to your account. When that allocation occurs, the total cash due or shares disbursed amount goes to zero.

Below each option listing, you can see its specific payout information. All of the payment information is listed out in blue headings.

Click the twisty next to each heading to view position information, payments, and payment activity.

The Position table shows you a record of each time the position was captured for this option – for example, a record date position capture. If there are any changes to your position in this option, such as dividend reinvestments, option elections, or repos, you will see them here as well.

Click on the link in the **Activity** column to view details for that position capture.

A popup window appears that contains the option activity details as well as an activity breakdown table, if available. Whenever an activity breakdown is present, you can export the table containing this information to Excel by clicking this link.

Print this information by clicking here.

Under the position for the option, there are headings for **Payments** and **Payment Activity**.

Click the twisty next to each to open and close this information.

The **Payments** area shows you the details of any payment that has taken place for this option. Here, you can see the **Payments** areas for both options.

Each payment appears as a row in its table and is assigned a payout number.

You can see the exact date and time that the payout was allocated to your account.

Here, you can also see whether the payout was made in cash or securities, depending on the option type. Note that the payout type will be consistent with the payout type displayed on the **Event Details** tab.

Transcript for "About the Entitlements Tab" Talking Help Topic

All of the parameters used in calculating each payment appear in the row – for example, the cash rate that will be paid for a cash dividend or the rate used to calculate shares for a dividend reinvestment. If the payout was made in securities, you will see the Security ID as well as the number of shares disbursed. The details here will vary based on the option type.

The Payment Activity table provides a summary of the activity that took place to collect that payment. Each row specifies the result of a payment detailed above. You will see the activity date, the allocation amount, and the activity.

The units of the allocation amount correspond to the **Payout Type** specified above. Here, "10" refers to the number of shares disbursed. In a cash dividend, this field will display the dollar amount of the payout that has been allocated to your account.

For cash dividends, all of the allocated amounts for each payment add up to the allocated amount for that option.

In this example, we show you a dividend reinvestment opt-out in which the electable option is a move to cash.

At any time, you can click a twisty to collapse a particular option, or click **Collapse All** to close all options.

Click **Return to Previous Page** to go back to your search results.