

AT&T ANIRA SSL VPN External User's Set-up Guide



Go to <http://www.attnetclient.com/> and download the AT&T Global Network Client. At the top of the screen, display the AGN Client pull-down. Selecting the V9 Downloads will provide you with a screen similar to that below. Click on the download button for **Managed VPN**. Click on 'Run', and then 'Install'.

In addition, AT&T now offers more than 340,000 Wi-Fi hotspots in more than 100 countries that are available to Remote Access Users (BIS, AVTS and ANIRA) who utilize the AT&T Global Network Client. The total AT&T Wi-Fi footprint is comprised of both AT&T Wi-Fi branded locations and AT&T partner Wi-Fi locations across the world.

Latest Downloads Feature

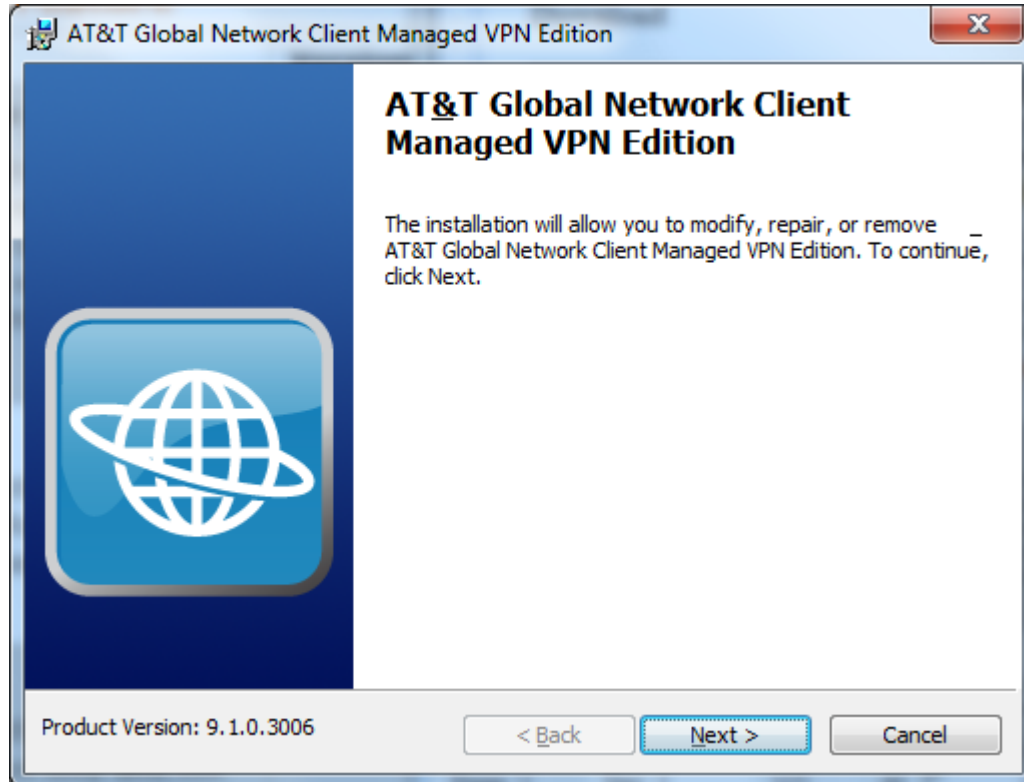
Name	Version	Date	Download
Laptop Connect Edition This version contains both the AT&T Managed VPN Edition as well as the drivers necessary to operate AT&T LaptopConnect. Use this version if you plan to use a Laptop Connect Device to connect.	9.1	Nov 2012	
Managed VPN Edition This version is for use with AT&T Managed VPN services allowing connections over Broadband, WiFi, Cellular, and Dial	9.1	Nov 2012	
Internet Edition This version is for use with AT&T Business Internet Services only and not an AT&T VPN Service.	9.1	Nov 2012	

Feature Comparison

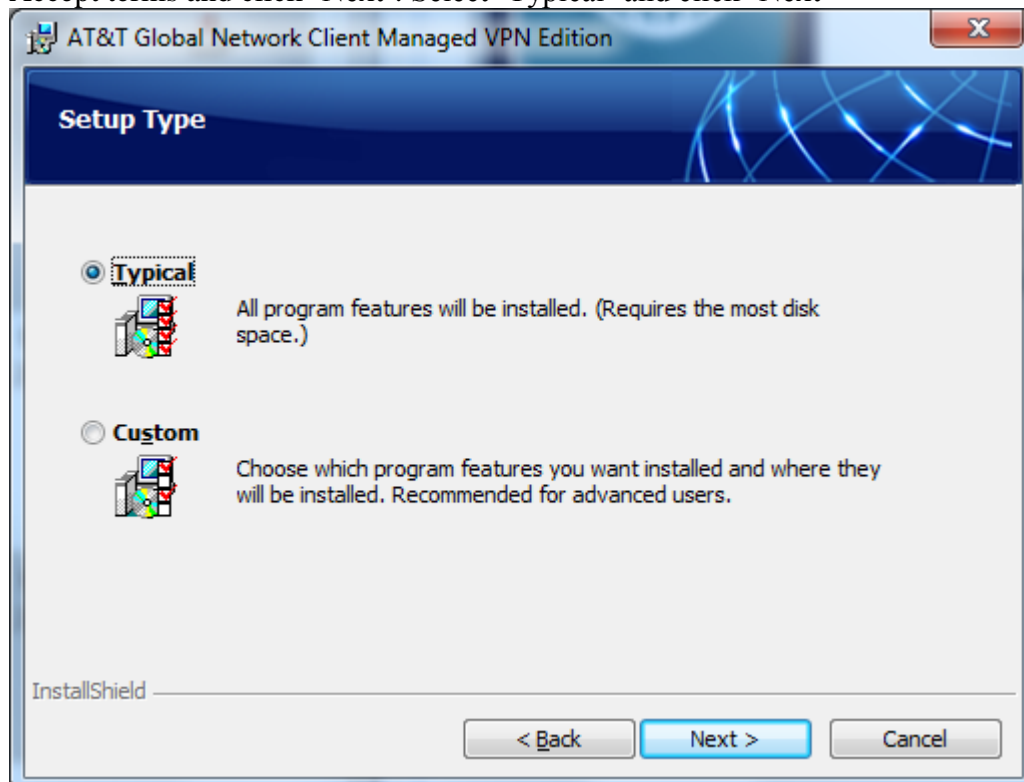
The AT&T Global Network Client comes in three different editions. The editions come with/without the AT&T Managed VPN and with/without LaptopConnect device drivers.

The LaptopConnect Edition is recommended for most users. If you're not sure which version is right for you, ask your network administrator or check the

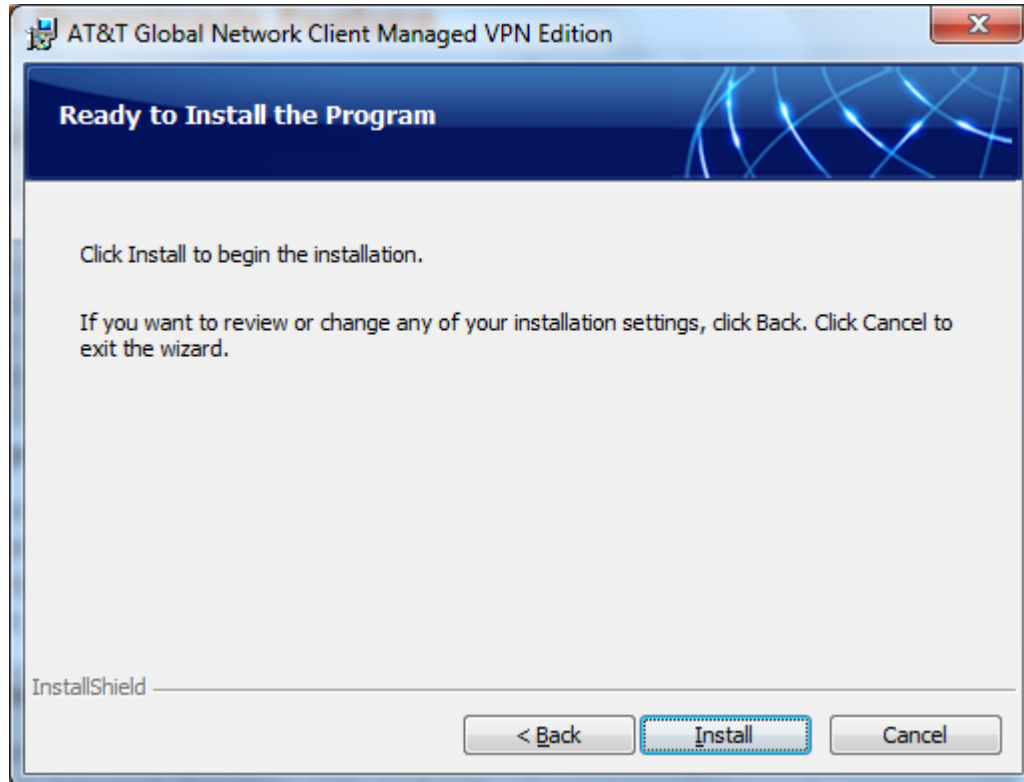
'Next'



Accept terms and click 'Next'. Select 'Typical' and click 'Next'



'Install'



When completed, 'Launch' the Network Client, or 'Finish' and launch from your desktop.



Click 'Connect'.

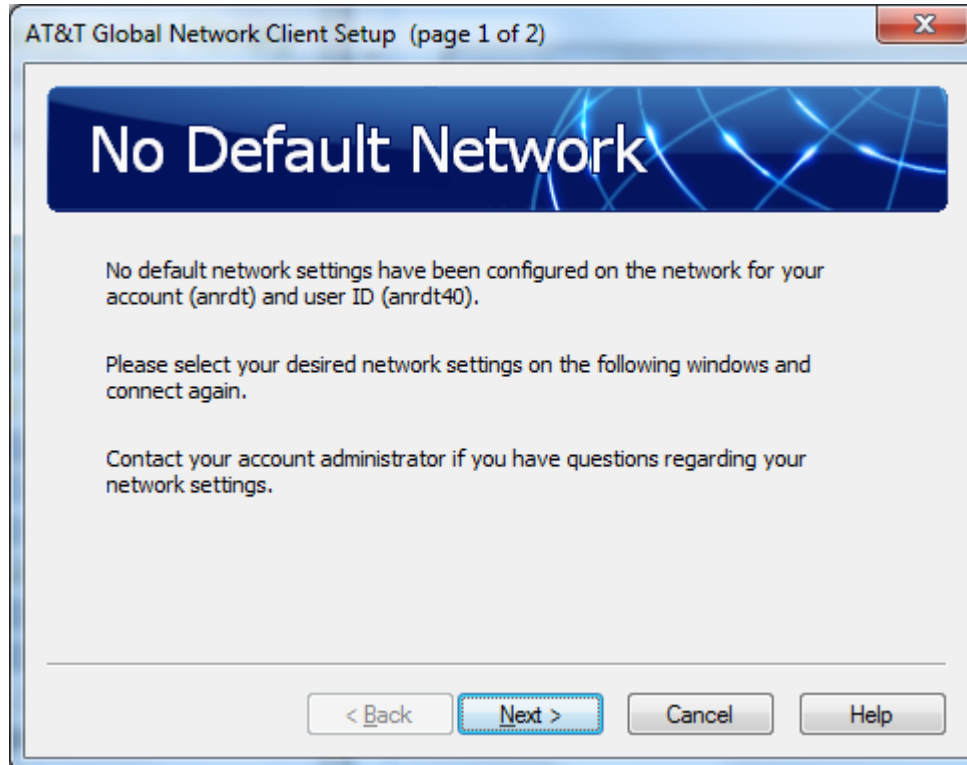


'Account' is "anrdt".

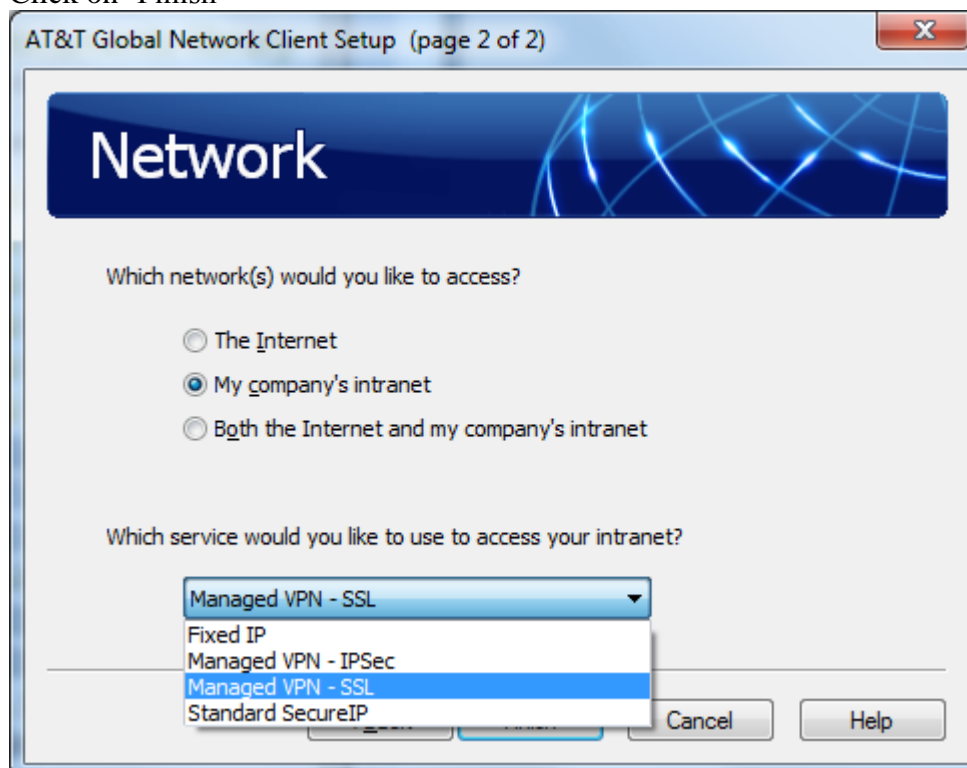
'User ID' and temporary 'Password' will be provided by DTCC,
After filling in fields, click on 'OK'



'Next'



Select 'My company's intranet' and 'Managed VPN - SSL'
Click on 'Finish'



Click on 'Connect' again.



The Network Login screen should appear with the Account and User ID you entered earlier. Re-enter your password and click OK.



If prompted to change your password, do so at this time.