



DTC END OF DAY POSITION

OVERVIEW

DTC End of Day Position File provides the total positions held by DTC, aggregated at a security level, and is sourced from DTCC's Depository Trust Company, the largest central securities depository in the world.

RECEIVE TIMELY INTELLIGENCE

DTC End of Day Position data can improve market transparency and reduce compliance risk associated with trading equity securities by providing insight into the float or the number of public shares a company has available for trading on the open market. Users can use the data to understand what shares are available for trading and calculate critical financial metrics while staying current on dilutive market activities resulting from conversions of convertible bonds, preferred stock, employee stock options rights, and warrants.

Use the DTC End of Position Data to customize trading strategies with insights derived from daily changes in DTC's End of Day position, such as new issuance, share buybacks, direct registrations, stock splits, employee stock option redemptions, or convertible security conversions. Users can obtain the current amount outstanding for fixed income securities and timely insight into calls, maturities, or conversions that may impact an issue's valuation, inclusion/removal from an index, or require replacement within a portfolio.

COVERAGE

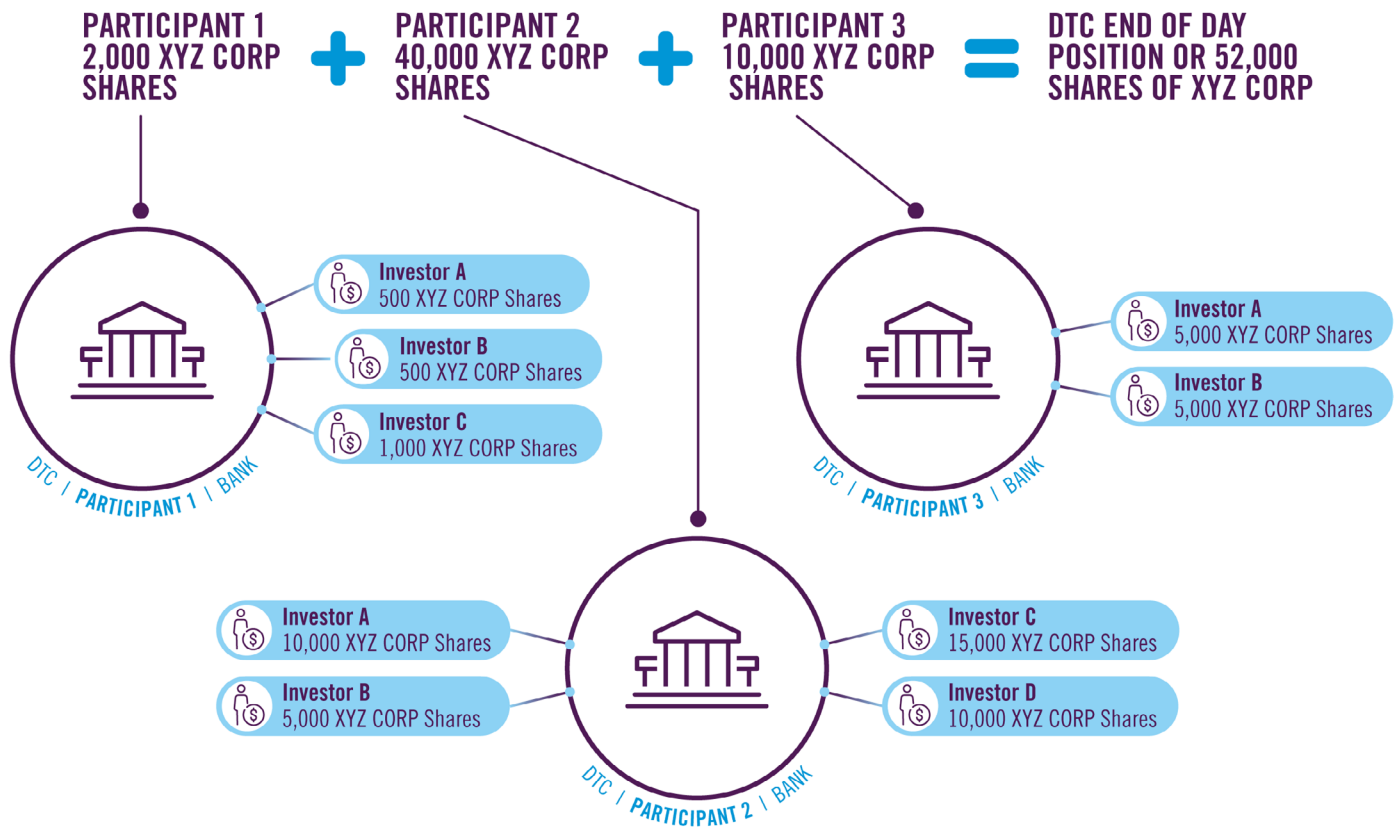
Coverage is based on a one-day sample from September, 2019 data.

DTC's End of Day Position Coverage

Security Class	Number of CUSIPs Covered	Number of Book Entry-Only CUSIPs
Municipals	924,292	919,738
Asset Backed Securities Collateralized Mortgage Obligations	121,367	111,727
Corporate Fixed Income	105,133	57,968
Equity	95,838	10,162
Funds Trusts	16,237	14,512
Not Applicable	4,075	37
Government Securities	1,437	764
Mortgaged Backed Securities	20	20
Total	1,268,399	1,114,928

HOW IT WORKS?

DTC's End of Day Position service represents the number of securities held (either par amount or shares) for each CUSIP. DTC End of Day Position for equity securities data reflects the float or the number of public shares a company has available for trading on the open market.



DELIVERY

- Subscribers will receive the files each business day at approximately 11 pm ET Monday-Friday.
- End of Day Position is delivered in comma-separated (CSV) files, standard output format, over the internet via SFTP.
- Historical data (from January 2, 2018) is available via a one-time delivery.
- Available on the Snowflake Marketplace.

¹The Depository Trust Company (DTC), DTCC's central securities depository subsidiary, provides depository and book-entry services and operates a securities settlement system. In this regard, DTC holds eligible securities on behalf of participants and its activities include transfers and pledges of securities, and the settlement of transactions for Participants by book-entry, free of payment or delivery versus payment.