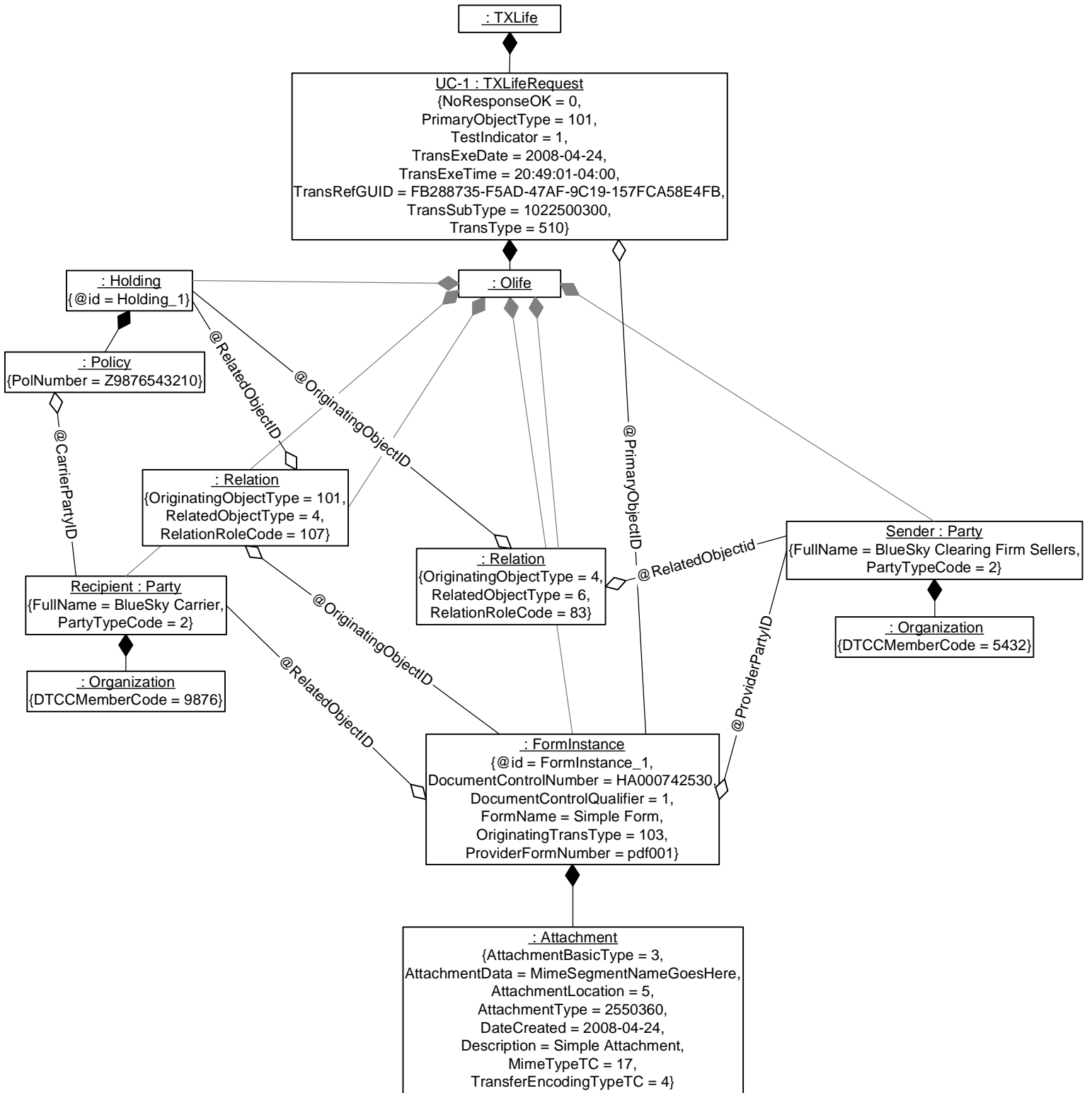
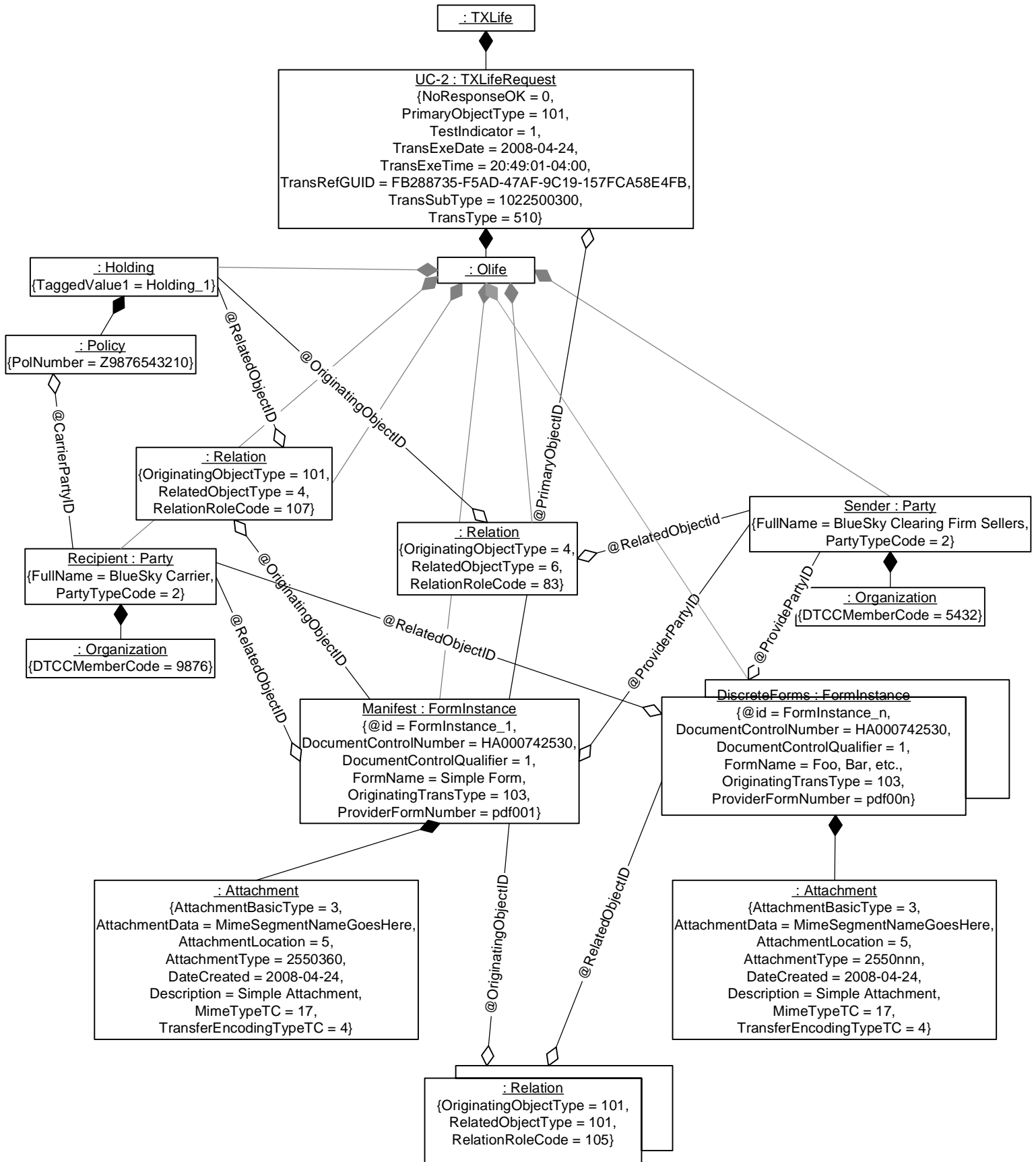


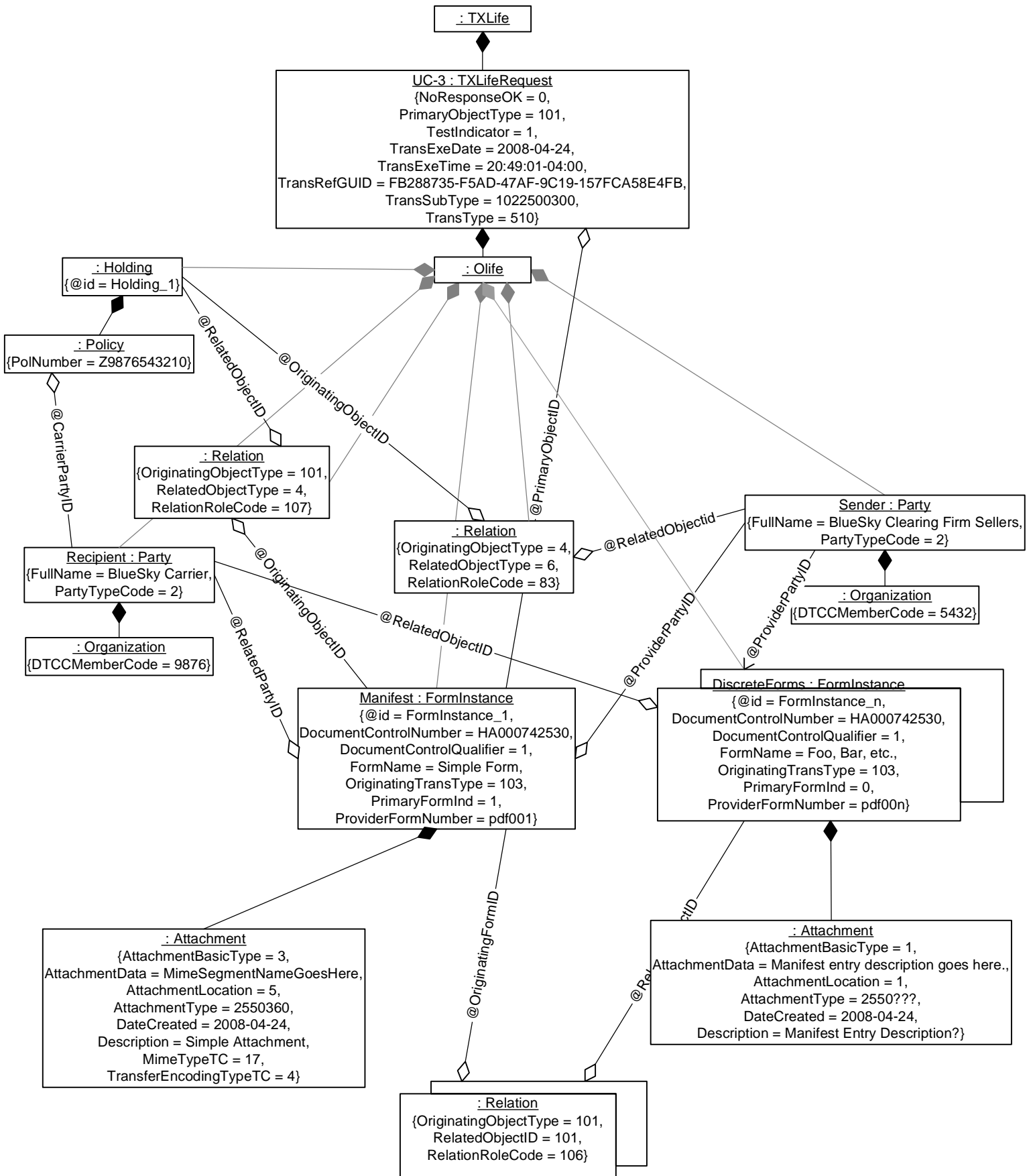
Use Case 1 - TX510 Request w/Single Attachment:



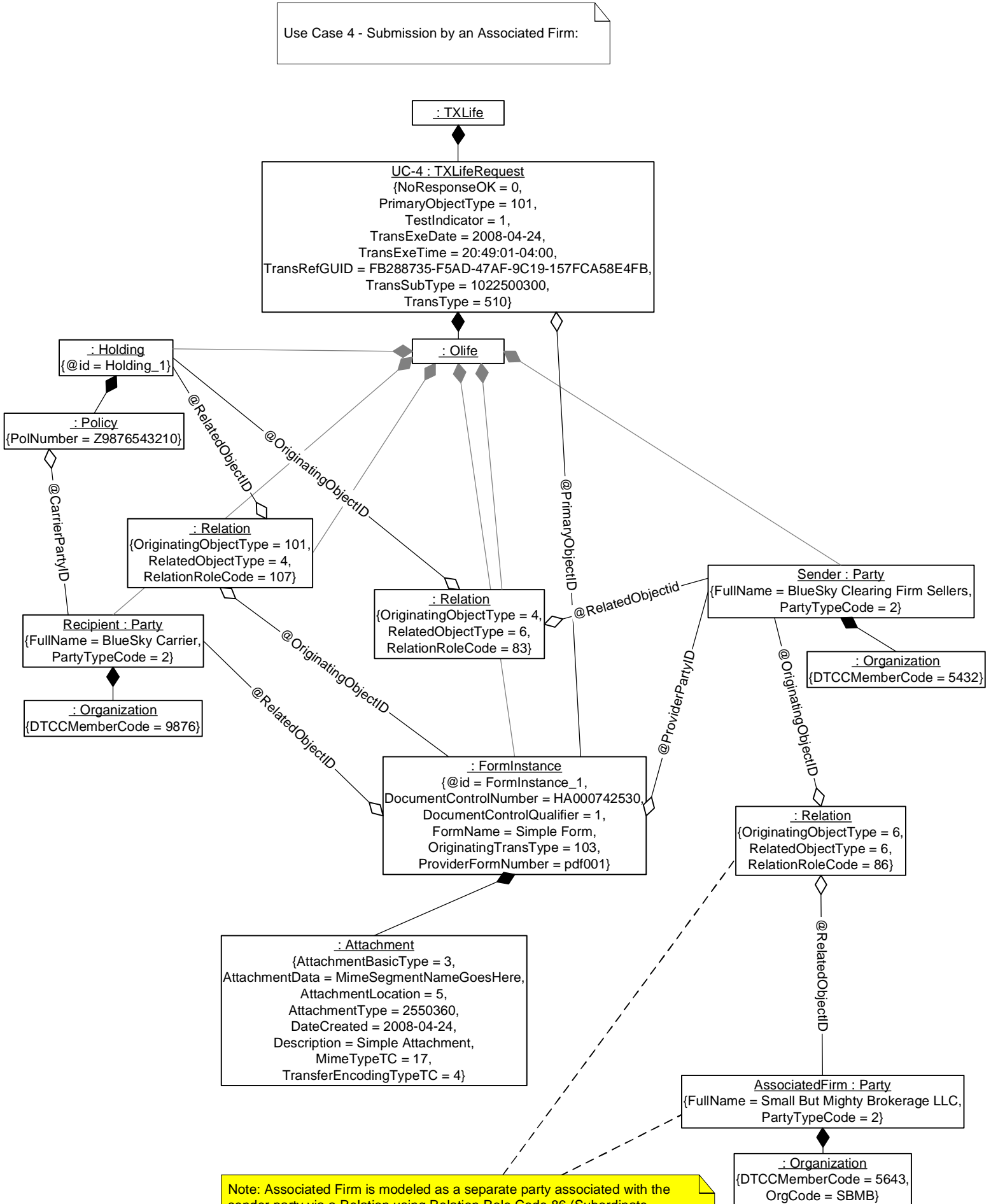
Use Case 2 - TX510 Request w/Manifest + Multiple Attachments:



Use Case 3 - TX510 Request w/Hybrid "Glob" plus Manifest:

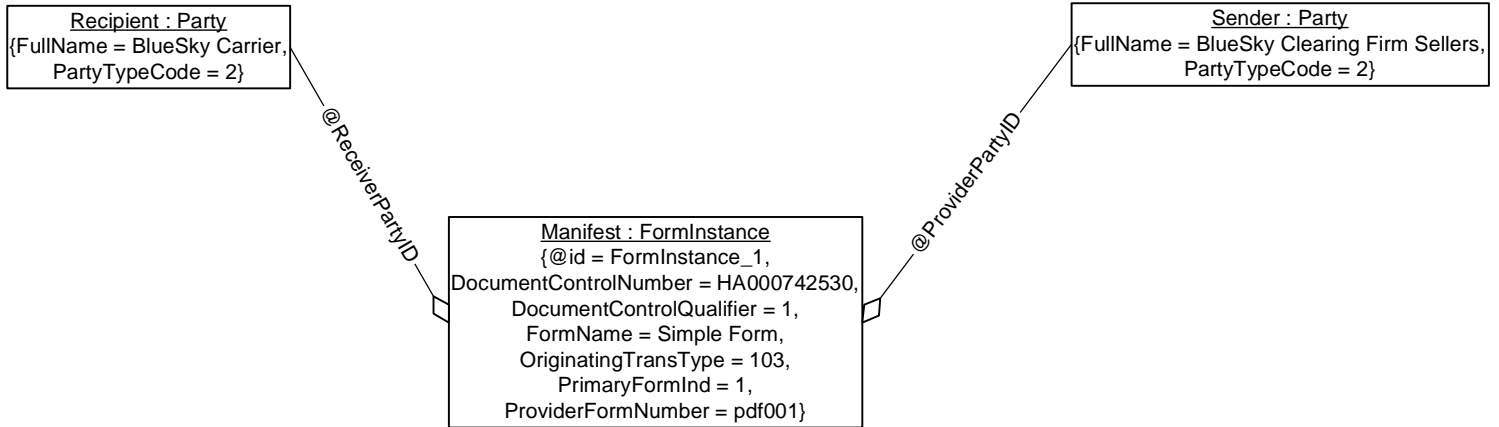


Use Case 4 - Submission by an Associated Firm:



Note: Associated Firm is modeled as a separate party associated with the sender party via a Relation using Relation Role Code 86 (Subordinate Office). The <OrgCode> element is used to convey the Associated Firm ID. The sending Party must be the "Originating Object", and the associated firm must be the "Related Object".

Alternative 1: Use IDREF's from FormInstance:



Alternative 2: Use Relation object:

