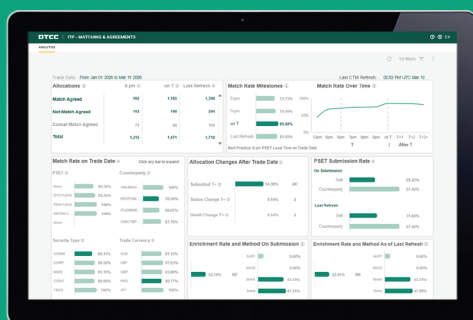


Unlock actionable insights into your operational performance

As settlement cycles accelerate and operational complexity increases, firms need a clear, consistent view of how their post-trade processes are performing.

DTCC's **operational dashboards for CTM® and TradeSuite ID®** provide actionable intelligence that helps firms monitor performance, prioritize action and manage risk.



The dashboards, powered by ITP Analytics, deliver actionable insights tailored to your workflows.

See 50+ key metrics in a single view and explore transaction data points for actionable insights into your operational performance.

- Ongoing performance monitoring**
 Maintain a consistent, day-to-day view of matching performance across your organization and counterparties, with an underlying trade dataset that spans both sides of the trade.
- Simplified user experience**
 Analyze your performance with flexible filters and customizable metrics views across daily, weekly, monthly, or quarterly timeframes.
- Interactive drill-downs**
 Drill down from summary metrics to underlying trade-level data and download large datasets for more detailed analysis.
- Faster identification of issues and exceptions**
 Track readiness for global accelerated settlement with insights into matching and affirmation performance, helping you prioritize and reduce operational risk.

Stay ahead of T+1 settlement risk with data-driven performance insights that strengthen operational discipline. Easily review your activity at scale to unlock efficiency opportunities and drive progress to more streamlined post-trade workflows.

Go to [MyDTCC](#) to learn more

© 2026 DTCC. All rights reserved. DTCC, DTCC (Stylized) and Financial Markets. Forward. are registered and unregistered trademarks of The Depository Trust & Clearing Corporation DTCC.

The services described above are provided under the "DTCC" brand name by certain affiliates of The Depository Trust & Clearing Corporation ("DTCC"). DTCC itself does not provide such services. Each of these affiliates is a separate legal entity, subject to the laws and regulations of the particular country or countries in which such entity operates. See www.dtcc.com for a detailed description of DTCC, its affiliates and the services they offer.

Certain ITP Services are subject to regulation. Visit dtcc.com/about/businesses-and-subsidiaries/dtccitp for more information.